

Housing People Sustainably

One Planet Living – The built environment and beyond

Mike Hill: WestWyck

14th November 2012

1

Market Failure

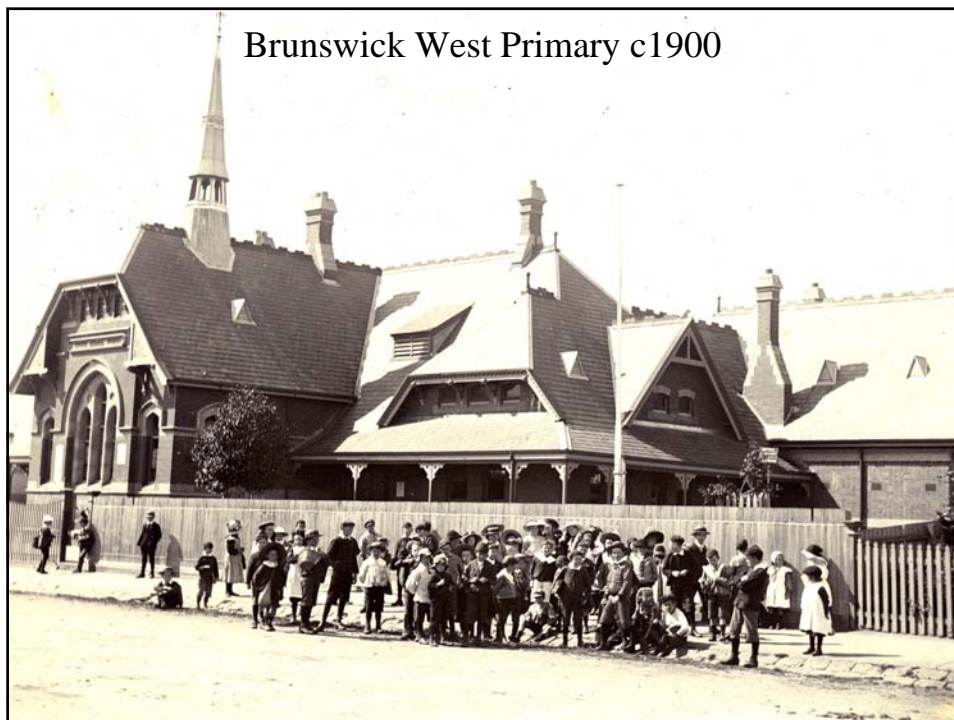
- sprawling city an unsustainable model predicated on the constant release of 'cheap' land
- devouring productive land / threats to bio diversity
- social failure / unsustainable lifestyles
- car dependency / the transport deficit
- poor design and unaffordable living

2

Thriving Urbanism: the new public domain

- contained city / legible city / compact city
- interactive city / watchful city / diverse city
- walkable city / public transport city
- mixed use neighbourhoods / good public places / multi-function villages / markets
- quality public infrastructure: boulevards / median strips / parks / grand buildings / durable materials
- commitment to the public realm
- sustainable city / water / energy / materials

3



PS #2890 circa 2000



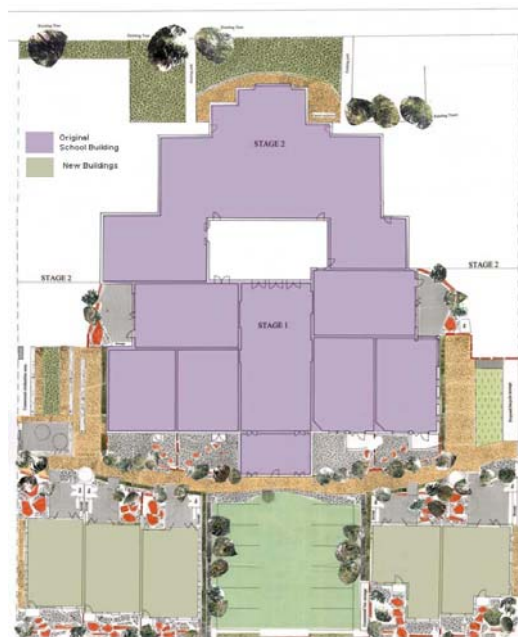
WestWyck open SHD September 2010

The Vision

- create a project that is influential in setting new standards for quality sustainable design and sustainable living
- recycle a notable Brunswick landmark building and respect the heritage characteristics of the neighbourhood and the building
- facilitate the creation of a sustainable urban community sharing common local native and productive gardens
- maximise the opportunity provided by a designated 'Urban Village' and reduce reliance upon motor vehicle usage
- develop a residential site according to key sustainability principles of 'materials efficiency', 'energy efficiency' and 'water efficiency'

7

Project Progress



8



Urban renewal



Bums and pumpkins

Low
energy
housing



Water
driven
landscaping



12





How can One Planet Principles Help WestWyck?

- connects us with an international movement to reduce our human footprint
- links WestWyck to other sustainable development models around the world
- cradle to grave / start to finish targets
- provides an additional sense of purpose to all associated with the development