

# Norman Disney & Fifty Years Young



Why Make Your  
Own Mistakes

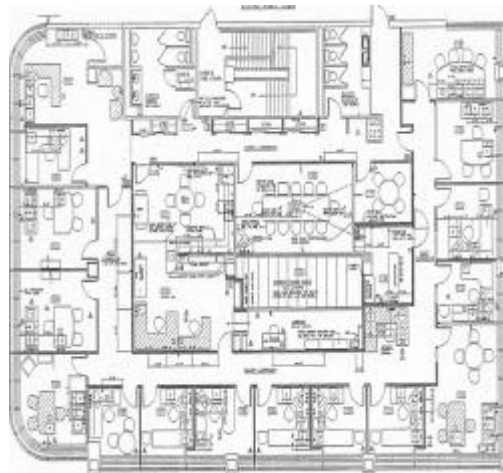


Michael Lewis



## Example 1 – Fast Track Commercial Building

- 10 to 12 on floor plantrooms.  
Each with one or two water cooled PAC units.
- Plantrooms already small in size at tender
- Plantrooms then reduced further under construction
- Result: Knock down and reconstruct plantrooms, program blowout, \$\$\$'s, heartache for everyone.



## Example 2 – Chocolate Warehouse Facility

- Importer of chocolates and other fine foods
- Single large split ducted unit
- No safe or easy access for servicing and maintenance.
- Result: Melted chocolate, loss of product & loss of major \$\$\$'s



## What Can We Learn From These Mistakes?

### **Example 1 – Fast Track Commercial Building**

- Early Spatial Design Input
- Stand up for your space
- Flexibility
- Allow space for other minor services
- Provision/contingency for the future



## What Can We Learn From These Mistakes?

### **Example 2 – Chocolate Warehouse Facility**

- Safe means of access to plant and equipment
- Make sure access is as easy as practical. If you can't reach it, it won't get serviced

