

The logo for Standards Australia, featuring a stylized yellow and white shape resembling a leaf or a drop, with several overlapping white circles of varying sizes surrounding it. The text "STANDARDS Australia" is positioned to the left of the graphic.

STANDARDS
Australia

CRITICAL UPDATE ON AUSTRALIAN STANDARDS

AS 1668 The use of ventilation in buildings

Alison Scotland, National Sector Manager

24 June 2014

Critical update on Australian Standards

AGENDA

Welcome

Background to projects

Introduction of new standards

Engaging with Standards Australia

Simon Hill, L.AIRAH

Critical update on Australian Standards

STARTING POINT

AS 1668.2-1991: Primary reference in BCA

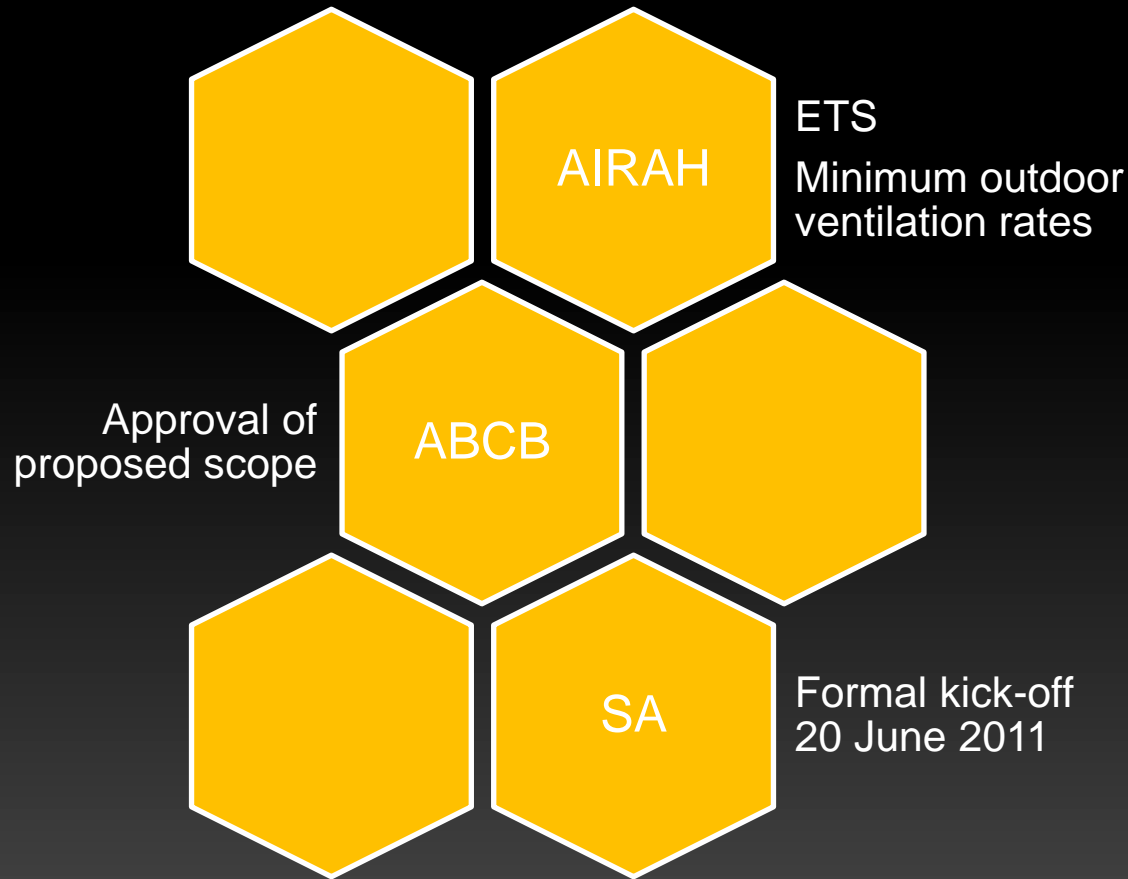
Early 2000 – work on new edition

Published in 2002

No adoption into the BCA

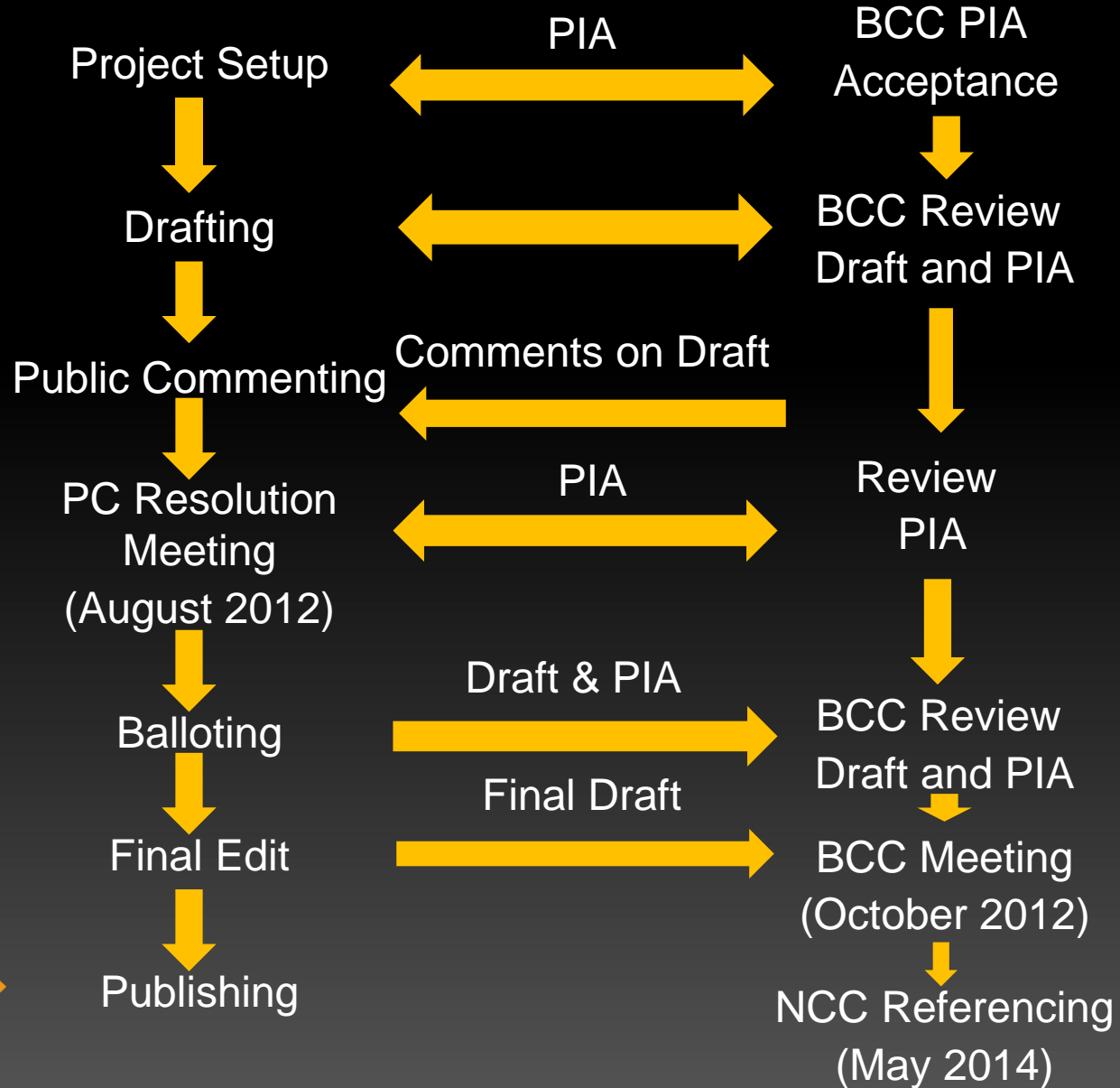
Critical update on Australian Standards

THE GENESIS OF THE 2012 EDITIONS



SA

ABCB



Critical update on Australian Standards

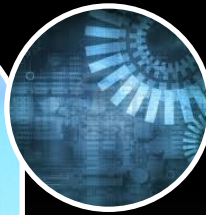
WHERE DID WE GET TO?

AS 1668.2-2012 - The use of ventilation and air conditioning in buildings - Mechanical ventilation in buildings

AS 1668.4-2012 The use of ventilation and air conditioning in buildings - Natural Ventilation of Buildings

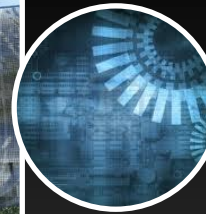
Critical update on Australian Standards

NATIONAL CONSTRUCTION CODE (BCA AND PCA)



Volume 1

- AS 1668.2 – Mechanical
- AS 1668.4 - Natural



Volume 2

- AS 1668.2 – Mechanical

STANDARDS DEVELOPMENT

PROJECT PRIORITISATION

SA Resourced Pathway



Seven rounds completed

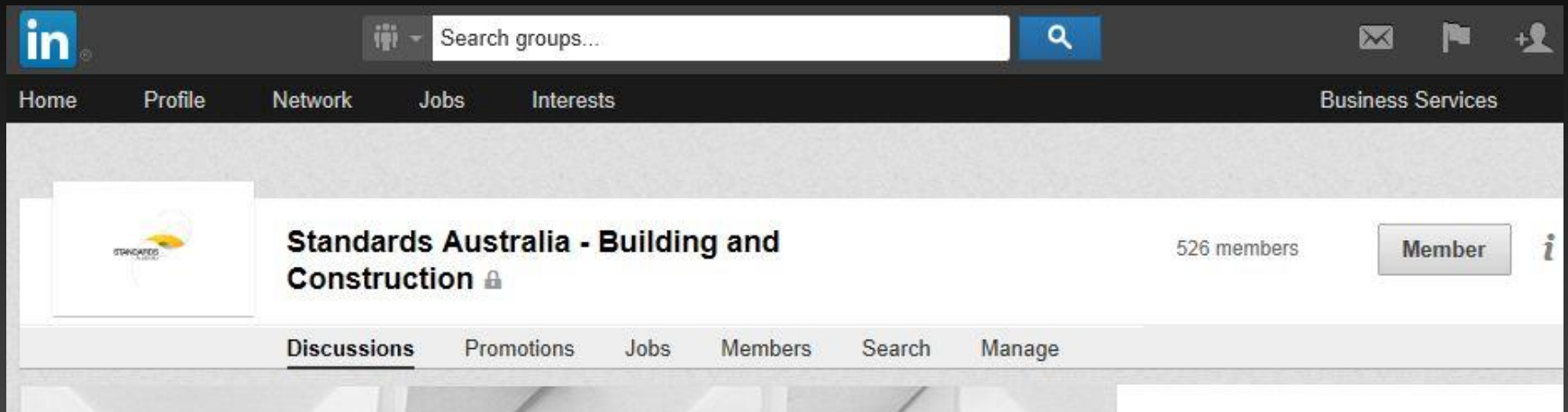
1081 new projects approved

Critical update on Australian Standards

ENGAGING WITH STANDARDS AUSTRALIA



Join us on LinkedIn



STAKEHOLDER ENGAGEMENT



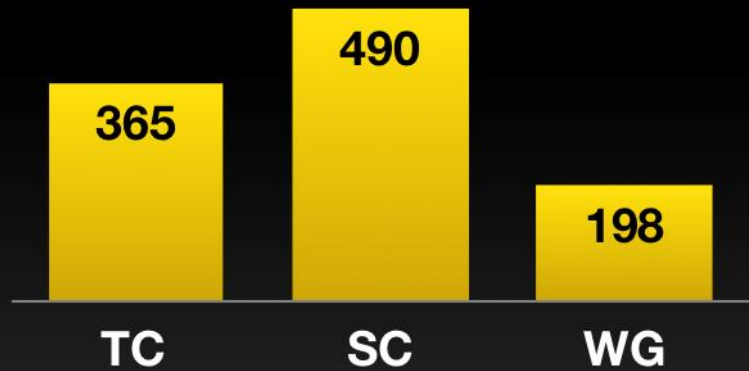
Sector and Issue Forums

26 forums, 600+ participants

- Aligning SA with emerging issues and needs
- Facilitating strategic engagement
- Engaging new stakeholders

STANDARDS DEVELOPMENT

TECHNICAL COMMITTEES



TC Technical Committee
SC Subcommittee
WG Working Group

Expert Contributors

Over 7,000

Initiatives/challenges

- Training
- E-meetings
- Engaging next generation